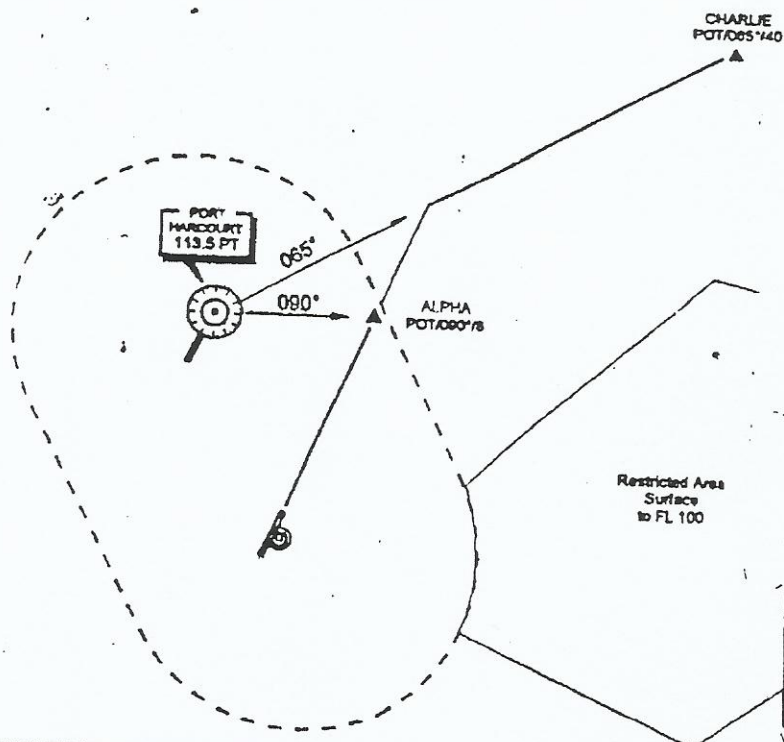


TRANS LEVEL FL50  
TRANS ALT 3500

PORT HARCOURT, NIGERIA SID  
PORT HARCOURT MILITARY  
RWY 04 DEPARTURES



	ROUTING	ALTITUDE
ALPHA to Abaji Eggs Jeb	After take-off Maintain runway heading and contact Approach on 124.9. Crossing 080° radial as cleared by PHC	Maintain 1000' until cleared higher by PHC
CHARLIE to Dakher Eilat	After take-off Maintain runway heading and contact Approach on 124.9. Intercept radial 065° from POT Passing CHARLIE resume normal NAV	Maintain 1000' until cleared higher by PHC. Passing FL110 resume normal NAV

Changes: None pnc.ck/2004