

ZZZZ

KUM

Makaya plates

25-juin-15

Koumra, CHAD

GPS Rwy 22

Alt Setting with Sarh Twr : 118,10 MHz

Ndjamena Control : 120,50 MHz, 8903 HF

Auto Info : 118,10 VHF

IFBP : 126,90 MHz

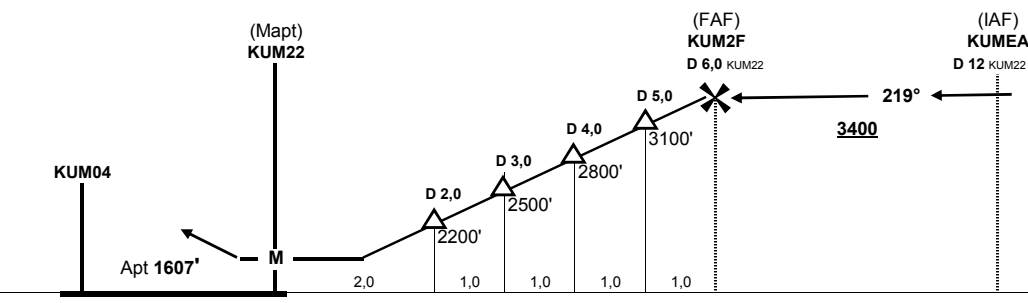
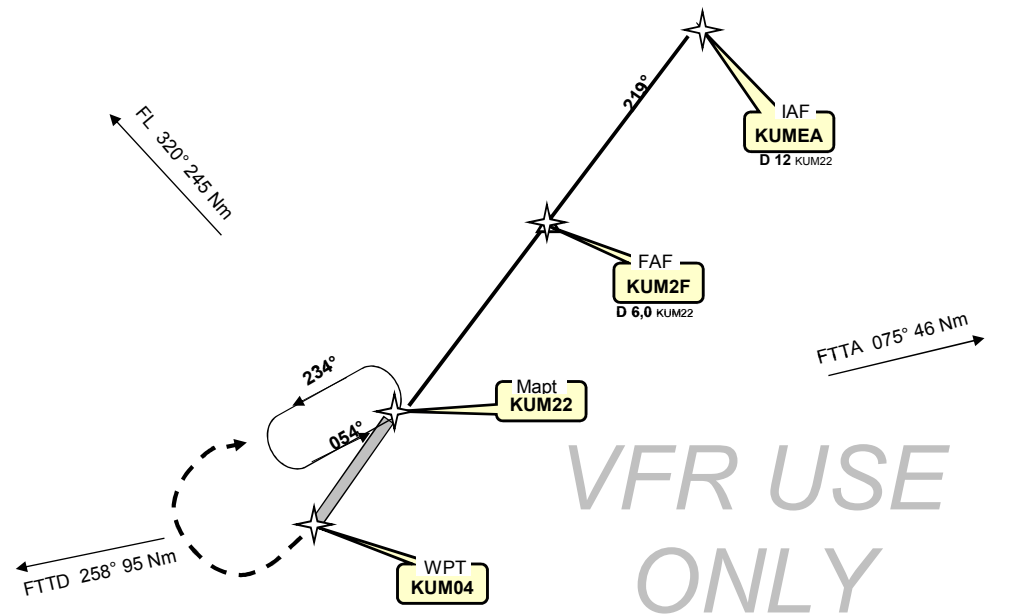
Wpt	Final Apch Crs	MDA (H)	Apt Elev	Rwy Lenght	Rwy Texture
KUM22	219°	2000' (400')	1607'	1800 m 5900'	TAR

3200'

25 Nm

MSA KUM22
Grid Mora 3200'

Missed App : climb straight ahead to 3200', then turn right and hold at KUM22



KUMEA	R 039°, 12 Nm from KUM22 N 09° 07,16' / E 017° 46,24'					
KUM2F	R 039°, 6 Nm from KUM22 N 09° 02.55' / E 017° 42,36'					
KUM22	N 08° 57,93' / E 017° 38,48'					
KUM04	N 08° 57,18' / E 017° 37,84'					
Grnd speed-Kts	100	110	120	130	140	150
Descent gradient 5,0%	500 fpm	550 fpm	600 fpm	650 fpm	700 fpm	750 fpm

CIRCLE TO LAND

MDA (H) 2000' (393')

NIGHT: Not Authorized

change : new edition

Makaya Airport Information Publication 2015 © Contact : flyingmakaya@yahoo.fr