

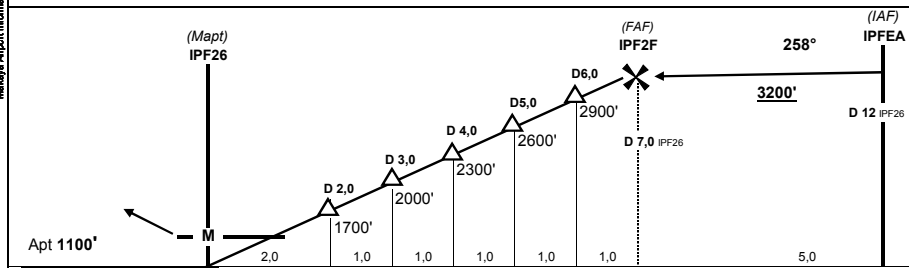
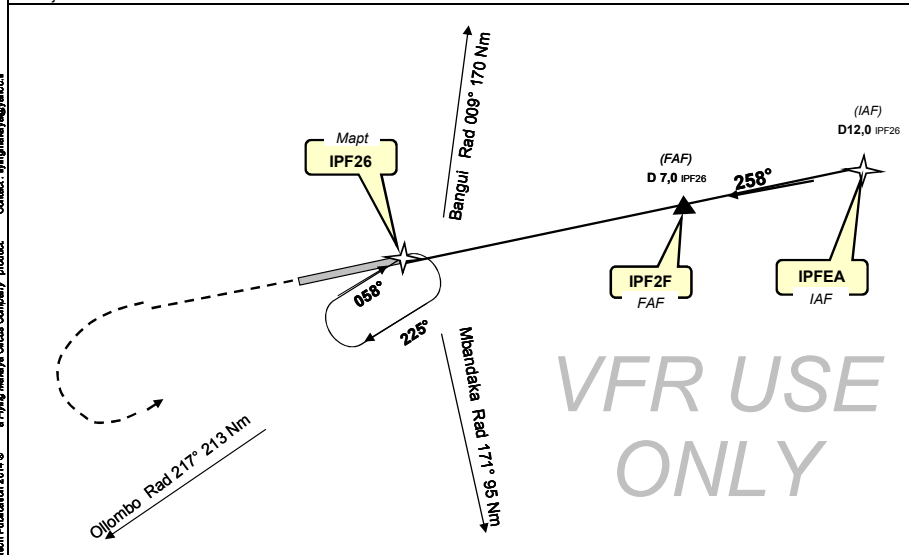
FCOI
IPF

AIP Makaya
27-Mar-14

Impfondo, Congo RPC
GPS Rwy 26

TWR - Auto Info : 118,30 VHF			Brazza : 128,90 VHF 8903 HF			<div style="border: 1px solid black; border-radius: 50%; width: 40px; height: 40px; display: flex; align-items: center; justify-content: center;"> 3200' (Grid 3200) </div> MSA IPF26 (MAP)
Auto Info IPFB : 126,90 MHz						
Wpt	Final Apch Crs	MDA (H)	Apt Elev	Rwy Length	RWY Texture	
IPF26	258°	1500' (400')	1100'	2050 m 3930'	TAR	

Missed App : Climb STRAIGHT AHEAD to 2500', then turn Left climbing to
to rejoin IPF26 and hold



IPFEA	N 01° 38,01' / E 018° 14,93'	(Brig 258° 12Nm from IPF26)	CIRCLE TO LAND MDA (H) 1500' (400') NIGHT: Authorized			
IPF2FA	N 01° XX,XX' / E 018° XX,XX'	(Brig 258° 7Nm from IPF26)				
IPF26	N 01° 35,44' / E 018° 03,20'	(Touch Down Zone)				
IPF08	N 01° 35,30' / E 018° 02,57'	(Touch Down Zone)				
Gnd speed-Kts	70	90	100	120	140	160
Descent gradient 5.0%	350	450	500	600	700	800

change : new edition

Malaysia Airport Information Publication 2014 © Flying Malay Air Company product. Contact: info@flyingmalay.com